



CANINE

INDICATIONS:

- Anorexia
- Malnutrition
- Inability to eat
- Post-surgery
- Pregnancy, lactation, growth

CONTRAINDICATIONS:

- None

FEEDING DURATION:

According to the veterinarian's assessment.



• An increased protein level promotes restoration of lean body mass, improves palatability during the post-operative period and avoids detrimental effect on immunity caused by protein deficiency.



• The omega-3 long-chain fatty acids EPA & DHA help maintain healthy joints, skin and digestive system.



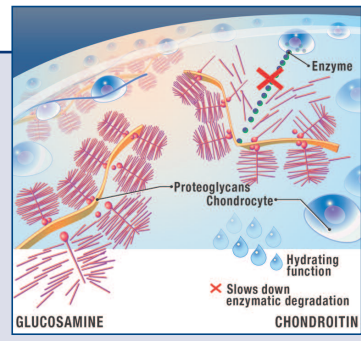
• The antioxidant complex (vitamin E, vitamin C, taurine, lutein) neutralises free radicals, helping protect health of cells, DNA and the immune system.



• Chondroitin inhibits enzymatic action on chondrocytes and hydrates cartilage. Glucosamine stimulates the synthesis of glycosaminoglycans and hyaluronic acid.

FURTHER INFORMATION:

The synergistic action of chondroitin and glucosamine helps to maintain joint health. Chondroitin inhibits enzymatic action on chondrocytes and hydrates cartilage. Glucosamine stimulates the synthesis of glycosaminoglycans and hyaluronic acid.



KEY VALUES: (per 100g dry matter)

Protein:	40%
Fat:	25%
Carbohydrate:	18.6%
NFE:	24.6%
Dietary fibre:	7.9%
Crude fibre:	1.8%
Metabolisable energy (C)*:	484 kcal
Omega-6:	3.75%
Omega-3:	1.07%
EPA & DHA:	0.86%
Calcium:	1.36%
Phosphorus:	1.39%
Sodium:	0.71%
Chondroitin+glucosamine:	50mg

Synergistic antioxidant complex:

Vitamin E:	71mg
Vitamin C:	21mg
Taurine:	607mg
Lutein:	0.34mg

*According to ATWATER's equation

INGREDIENTS:

Pork and poultry meat, pork and poultry liver, maize, sardine, maize gluten, minerals, fish oil, tomato powder, beet pulp, cellulose fibre, carrageenan, marigold extract (rich in lutein), taurine, trace elements (including chelated trace elements), hydrolysed crustaceans (source of glucosamine), hydrolysed cartilage (source of chondroitin), vitamins.

RECOMMENDED DAILY INTAKE:

It is recommended to divide the daily intake into several small meals.

Dog's weight	thin		normal		overweight	
	grammes	cans	grammes	cans	grammes	cans
2kg	200	1/2	160	1/2	120	1/4
5kg	395	1	315	3/4	235	1/2
10kg	655	1 1/2	525	1 1/4	395	1
15kg	880	2 1/4	705	1 3/4	530	1 1/4
20kg	1085	2 3/4	870	2	650	1 1/2
25kg	1280	3	1020	2 1/2	765	1 3/4
30kg	1460	3 1/2	1165	2 3/4	875	2 1/4
35kg	1635	4	1305	3 1/4	980	2 1/2
40kg	1800	4 1/2	1440	3 1/2	1080	2 3/4



Can: 410g