

INDICATIONS:

- Chronic renal failure (CRF)
- Reduction of recurrence of urolithiasis requiring urine alkalinisation: urate and cystine uroliths
- Reduction of formation of oxalate stones in dogs with impaired renal function

CONTRAINDICATIONS:

- Pregnancy, lactation, growth
- Pancreatitis or history of pancreatitis
- Hyperlipidaemia

FEEDING DURATION:

Provides dietary support in chronic renal failure including early renal failure. Renal Canine should be fed for the pet's lifetime. Regular veterinary checks are advised.



• In chronic renal failure (CRF), the kidneys are no longer able to properly eliminate phosphorus. Limiting the dietary phosphorus intake is an essential part of nutritional support



• A higher intake of long-chain omega-3 fatty acids (EPA & DHA) helps to maintain the glomerular filtration rate.



• Flavonols (a particular type of green tea polyphenols) have two major actions: they neutralise free radicals and promote renal perfusion.



• Increased uraemia may induce the formation of gastric and intestinal mucosa ulcers. The combination of zeolite with FOS helps protect the mucosae.

FURTHER INFORMATION:

Dogs with renal failure have a reduced **appetite** so highly palatable food is essential. Canine Renal kibble is **easily crunched** even by dogs with oral pain.

Dogs with renal failure are often elderly: Renal Canine has a **very high antioxidant content** to neutralise free radicals, the negative effects of which increase with age.

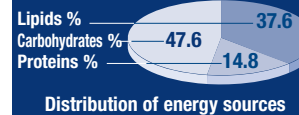
KEY VALUES:

Protein:	16%
Fat:	18%
Carbohydrate:	46.2%
NFE:	51.1%
Dietary fibre:	7.3%
Crude fibre:	2.4%
Metabolisable energy (C)*:	4,304 kcal/kg
Metabolisable energy (M)**:	4,130 kcal/kg
Omega-6:	4.11%
Omega-3:	0.84%
EPA & DHA:	0.42%
Calcium:	0.7%
Phosphorus:	0.2%
Sodium:	0.2%
Potassium:	0.68%
Vitamin D3:	1,030IU/kg
Flavonols:	400mg/kg

Synergistic antioxidant complex:

Vitamin E:	600mg/kg
Vitamin C:	200mg/kg
Taurine:	2,100mg/kg
Lutein:	5mg/kg

INGREDIENTS:



Rice, maize flour, animal fats, soya protein isolate, maize gluten, hydrolysed animal proteins, beet pulp, minerals, egg powder, fish oil, Fructo-Oligo-Saccharides (FOS), vegetable fibres, soya oil, L-arginine, potassium citrate, taurine, green tea extracts (rich in polyphenols), marigold extract (rich in lutein), L-tryptophan.

RECOMMENDED DAILY INTAKE:

It is recommended to divide the daily intake into 2 meals.

Dog's weight	thin		normal		overweight	
	grammes	cups	grammes	cups	grammes	cups
2kg	65	6/8	50	5/8	40	4/8
4kg	110	1 2/8	85	1	65	6/8
6kg	145	1 5/8	115	1 3/8	85	1
8kg	180	2 1/8	145	1 5/8	110	1 2/8
10kg	210	2 3/8	170	2	125	1 4/8
15kg	285	3 2/8	230	2 5/8	170	2
20kg	350	4	280	3 2/8	210	2 3/8
25kg	415	4 6/8	330	3 7/8	250	2 7/8
30kg	470	5 4/8	380	4 3/8	285	3 2/8
35kg	530	6 1/8	425	4 7/8	315	3 5/8
40kg	580	6 6/8	465	5 3/8	350	4
50kg	685	7 7/8	550	6 3/8	410	4 6/8
60kg	785	9 1/8	625	7 2/8	470	5 4/8
70kg	875	10 1/8	700	8 1/8	525	6 1/8
80kg	965	11 1/8	775	9	580	6 6/8



2, 7 and 14kg bag



Actual size