

Yorkshire Terrier 28

ADULT
> 10 months



Targeted "hair" beauty

The combined action of borage oil and biotin help promote the hair's softness and sheen. The patented "intensive colour" nutrient brings out the coat's colour. Helps hair growth and strength with an optimal level of sulphur amino acids essential for the synthesis of keratin.

▼ Tartar reduction

Helps reduce tartar formation thanks to the presence of calcium chelators which "trap" the calcium in the saliva.

▼ Satisfies fussy appetites

Satisfies the fussiest of appetites thanks to a combination of exceptional flavours.

▼ Longevity programme

Helps maintain vitality in the Yorkshire Terrier which has exceptional longevity.



Exclusive kibble



available in 1.5kg

RECOMMENDED DAILY INTAKE (in g)

Adult weight (in kg)

Average density: 360 g/l	[in g]	Needs	2	3	4
		Reduced ⁽¹⁾		50	65
	Normal		55	70	90
	Increased ⁽²⁾		60	80	100
	Extra ⁽³⁾		70	95	115
	[in cup]	Needs	2	3	4
	Reduced ⁽¹⁾		5/8	6/8	7/8
	Normal		5/8	6/8	1
	Increased ⁽²⁾		6/8	7/8	1+1/8
	Extra ⁽³⁾		6/8	1+1/8	1+3/8

1 cup = 240ml

(1) No activity, neutered, overweight.

(2) High activity, cold environment, slim, or a group of dogs.

(3) A very large group of dogs.

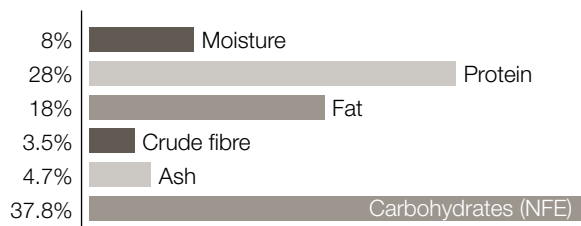
Ingredients: rice, dehydrated poultry meat, maize flour, animal fats, vegetable protein isolate*, maize gluten, maize, hydrolysed animal proteins, vegetable fibres, beet pulp, minerals, vegetable oils (soya and borage), fish oil, yeasts, fructo-oligo-saccharides, sodium polyphosphate, taurine, yeast extract (source of manno-oligo-saccharides), DL-methionine, egg powder, hydrolysed crustaceans (source of glucosamine), L-tyrosine, green tea and grape extracts (source of polyphenols), L-carnitine, hydrolysed cartilage (source of chondroitin), marigold extract (source of lutein).

*L.I.P.: protein selected for its very high assimilation.



AVERAGE ANALYSIS

GUARANTEED ANALYSIS



OTHER GUARANTEES

Starch	%	32.9
Dietary fibre	%	8.4
Omega 6	%	3.2
Omega 3	%	0.6
EPA + DHA	%	0.3

MINERALS

Calcium	%	0.7	Copper	mg/kg	23
Phosphorus	%	0.6	Iron	mg/kg	135
Sodium	%	0.3	Manganese	mg/kg	70
Potassium	%	0.6	Zinc	mg/kg	240
Magnesium	%	0.1	Selenium	mg/kg	0.16
			Iodine	mg/kg	2.9

VITAMINS

Vit. A	IU/kg	33000
Vit. D3	IU/kg	800
Vit. E	mg/kg	600
Vit. C	mg/kg	300
B1 (Thiamin)	mg/kg	56
B2 (Riboflavin)	mg/kg	56
Calcium pantothenate	mg/kg	166
B6 (Pyridoxine)	mg/kg	86.3
B7 (Inositol)	mg/kg	1100
B12 (Cyanocobalamin)	mg/kg	0.17
Niacin	mg/kg	500
Biotin	mg/kg	3.3
Folic acid	mg/kg	17.5
Choline	mg/kg	1500

OTHER NUTRIENTS

Taurine	%	0.29
L-Carnitine	mg/kg	100
Grape & Green tea Polyphenols	mg/kg	150
Glucosamine + chondroitin	mg/kg	500
Lutein	mg/kg	5

METABOLISABLE ENERGY (ME)

ME (NRC 74)	kcal/kg	4252
ME (NRC 85)	kcal/kg	3833
ME (Measured)	kcal/kg	4080