

# Chihuahua 28

**ADULT**  
> 8 months



**Superior attraction**

Stimulates appetite in the fussiest of Chihuahuas, thanks to its exclusive formulation with selected natural flavours and appropriate size and shape of kibble.

▼ **Stool & odour reduction**

Helps reduce the volume and odour of the stools.

▼ **Tartar reduction**

Helps reduce the formation of tartar thanks to a tailor made kibble with a layered texture and calcium chelators.

▼ **Special miniature jaw**

Kibble adapted to the Chihuahua's tiny jaw.





Exclusive kibble



## RECOMMENDED DAILY INTAKE (in g)

### Adult weight (in kg)

Average density: 300 g/l	[in g]	Needs	1	1.5	2	2.5	3	3.5
		Reduced <sup>(1)</sup>		30	40	50	55	65
	Normal		35	50	60	70	80	90
	Increased <sup>(2)</sup>		40	55	70	85	95	105
	[in cup]	Needs	1	1.5	2	2.5	3	3.5
		Reduced <sup>(1)</sup>	3/8	4/8	4/8	5/8	6/8	7/8
		Normal	3/8	4/8	5/8	6/8	7/8	1
		Increased <sup>(2)</sup>	4/8	5/8	6/8	7/8	1	1+1/8

1 cup = 240ml

(1) No activity, neutered, overweight.

(2) High activity, cold environment, slim, or a group of dogs.

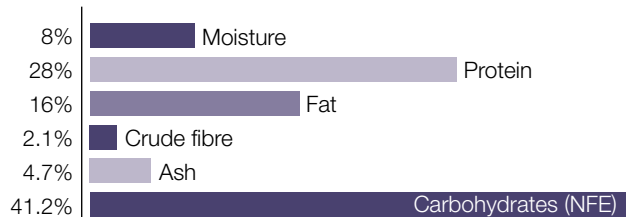


**Ingredients:** rice, maize, dehydrated poultry meat, vegetable protein isolate\*, animal fats, hydrolysed animal proteins, beet pulp, vegetable fibres, minerals, vegetable oils (soya and borage), fish oil, fructo-oligo-saccharides, sodium polyphosphate, taurine, DL-methionine, L-tyrosine, hydrolysed crustaceans (source of glucosamine), green tea and grape extracts (source of polyphenols), L-carnitine, marigold extract (source of lutein), hydrolysed cartilage (source of chondroitin).

\*L.I.P.: protein selected for its very high assimilation.

## AVERAGE ANALYSIS

### GUARANTEED ANALYSIS



### OTHER GUARANTEES

Starch	%	36
Dietary fibre	%	7.3
Omega 6	%	3.1
Omega 3	%	0.6
EPA + DHA	%	0.3

### MINERALS

Calcium	%	0.7	Copper	mg/kg	23
Phosphorus	%	0.6	Iron	mg/kg	160
Sodium	%	0.3	Manganese	mg/kg	75
Potassium	%	0.67	Zinc	mg/kg	244
Magnesium	%	0.07	Selenium	mg/kg	0.17
			Iodine	mg/kg	2.9

### VITAMINS

Vit. A	IU/kg	30000
Vit. D3	IU/kg	800
Vit. E	mg/kg	600
Vit. C	mg/kg	300
B1 (Thiamin)	mg/kg	56
B2 (Riboflavin)	mg/kg	56
Calcium pantothenate	mg/kg	166
B6 (Pyridoxine)	mg/kg	86.6
B7 (Inositol)	mg/kg	1100
B12 (Cyanocobalamin)	mg/kg	0.17
Niacin	mg/kg	500
Biotin	mg/kg	3.3
Folic acid	mg/kg	17.5
Choline	mg/kg	1500

### OTHER NUTRIENTS

Taurine	%	0.3
L-Carnitine	mg/kg	200
Grape & Green tea Polyphenols	mg/kg	150
Glucosamine + chondroitin	mg/kg	500
Lutein	mg/kg	5

### METABOLISABLE ENERGY (ME)

ME (NRC 74)	kcal/kg	4208
ME (NRC 85)	kcal/kg	3782
ME (Measured)	kcal/kg	4040