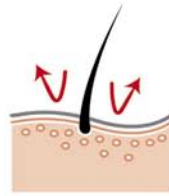


Cocker 25

ADULT
> 12 months



**Healthy skin
& beautiful coat**

Helps support the skin's role as "barrier" (skin complex) and maintain health of the skin and ears thanks to EPA & DHA. Reveals the coat's natural beauty thanks to its content of borage oil and biotin.

▼ **Weight management**

Helps preserve the English and American Cocker Spaniel's healthy weight.

▼ **Vision support**

Helps support vision and eye health thanks to the antioxidant content.

▼ **Cardiac Tone**

Supports optimal function of the cardiac muscle.



Exclusive kibble



available in
3kg and 13kg

RECOMMENDED DAILY INTAKE (in g)

Adult weight (in kg)

Average density: 340 g/l	[in g]	Needs	10	12	14
		Reduced ⁽¹⁾		160	185
	Normal		180	205	230
	Increased ⁽²⁾		195	225	250
	Extra ⁽³⁾		230	265	295
	[in cup]	Needs	10	12	14
	Reduced ⁽¹⁾		2	2+2/8	2+4/8
	Normal		2+2/8	2+4/8	2+7/8
	Increased ⁽²⁾		2+3/8	2+6/8	3+1/8
	Extra ⁽³⁾		2+7/8	3+2/8	3+5/8

1 cup = 240ml

(1) No activity, neutered, overweight.

(2) High activity, cold environment, slim, or a group of dogs.

(3) A very large group of dogs.

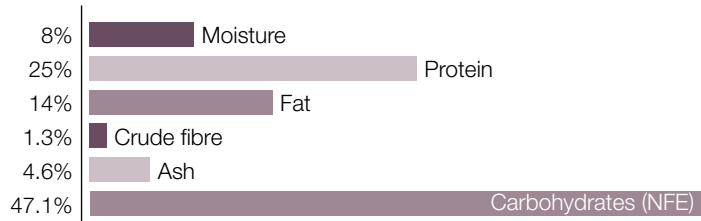


Ingredients: rice, maize, dehydrated poultry meat, animal fats, vegetable protein isolate*, hydrolysed animal proteins, maize gluten, beet pulp, fish oil, minerals, vegetable oils (soya and borage), fructo oligo-saccharides, psyllium husks and seeds, sodium polyphosphate, yeast extract (source of manno oligo-saccharides), L-tyrosine, taurine, egg powder, L-lysine, hydrolysed crustaceans (source of glucosamine), marigold extract (source of lutein), green tea and grape extracts (source of polyphenols), L-carnitine, hydrolysed cartilage (source of chondroitin).

*L.I.P.: protein selected for its very high assimilation.

AVERAGE ANALYSIS

GUARANTEED ANALYSIS



OTHER GUARANTEES

Component	%	Value
Starch	%	41.8
Dietary fibre	%	6.6
Omega 6	%	2.8
Omega 3	%	0.7
EPA + DHA	%	0.4

MINERALS

Component	%	Value
Calcium	%	0.75
Phosphorus	%	0.7
Sodium	%	0.36
Potassium	%	0.6
Magnesium	%	0.08
Copper	mg/kg	22
Iron	mg/kg	135
Manganese	mg/kg	67
Zinc	mg/kg	230
Selenium	mg/kg	0.16
Iodine	mg/kg	2.8

VITAMINS

Vitamin	Value
Vit. A	IU/kg 32000
Vit. D3	IU/kg 780
Vit. E	mg/kg 600
Vit. C	mg/kg 300
B1 (Thiamin)	mg/kg 54
B2 (Riboflavin)	mg/kg 54
Calcium pantothenate	mg/kg 150
B6 (Pyridoxine)	mg/kg 83.2
B7 (Inositol)	mg/kg 1060
B12 (Cyanocobalamin)	mg/kg 0.16
Niacin	mg/kg 500
Biotin	mg/kg 3.20
Folic acid	mg/kg 16.8
Choline	mg/kg 2500

OTHER NUTRIENTS

Nutrient	%	Value
Taurine	%	0.28
L-Carnitine	mg/kg	100
Polyphenols	mg/kg	150
Glucosamine + chondroitin	mg/kg	500
Lutein	mg/kg	5

METABOLISABLE ENERGY (ME)

ME Type	kcal/kg	Value
ME (NRC 74)	kcal/kg	4144
ME (NRC 85)	kcal/kg	3714
ME (Measured)	kcal/kg	3978