

# Labrador Retriever 33

**JUNIOR**  
< 15 months



## Safe growth

Ensures healthy development of the Labrador puppy's strong bones thanks to an ideal intake of energy, proteins, calcium and phosphorus. Helps to support joints at an early age thanks to the action of chondroitin, glucosamine and EPA & DHA.

*To maintain the ideal weight, follow the recommended feeding guide and monitor the body's condition.*

### ▼ Avoids excess weight gain

Helps maintain the Labrador's ideal weight from a very young age.

### ▼ Prebiotics & psyllium

Promotes a balanced intestinal flora thanks to prebiotics and psyllium.

### ▼ Strong natural defences

Helps support the young puppy's natural defences.

Exclusive kibble



available in  
3kg and 12kg

## RECOMMENDED DAILY INTAKE (in g)

### Adult weight (in kg)



[in g]	Age in month	25	30	35	40
		2	235	240	255
	3	285	305	335	360
	4	310	345	380	405
	6	395	460	500	540
	8	380	445	485	525
	10	360	425	465	505
	12	350	410	445	485
	14	340	395	430	465

[in cup]	2	3	4	6	8	10	12	14
2+5/8	2+5/8	2+6/8	3					
3+1/8	3+3/8	3+5/8	4					
3+3/8	3+6/8	4+1/8	4+4/8					
4+3/8	5	5+4/8	5+7/8					
4+1/8	4+7/8	5+3/8	5+6/8					
4	4+5/8	5+1/8	5+4/8					
3+7/8	4+4/8	4+7/8	5+3/8					
3+6/8	4+3/8	4+6/8	5+1/8					

Average density: 380 g/l

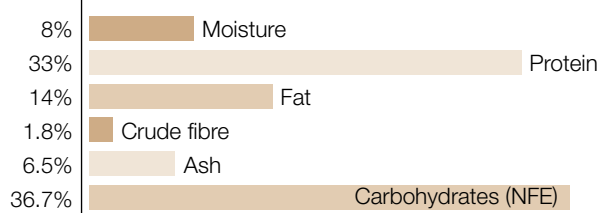
1 cup = 240ml

**Ingredients:** rice, dehydrated poultry meat, vegetable protein isolate\*, maize, animal fats, maize gluten, barley, hydrolysed animal proteins, minerals, fish oil, vegetable fibres, vegetable oils (soya and borage), egg powder, beet pulp, fructo-oligo-saccharides, psyllium husks and seeds, L-lysine, sodium polyphosphate, yeast extract (source of manno-oligo-saccharides), hydrolysed crustaceans (source of glucosamine), taurine, DL-methionine, marigold extract (source of lutein), L-carnitine, hydrolysed cartilage (source of chondroitin).

\*L.I.P.: protein selected for its very high assimilation.

## AVERAGE ANALYSIS

### GUARANTEED ANALYSIS



### OTHER GUARANTEES

Starch	%	32
Dietary fibre	%	6.5
Omega 6	%	2.8
Omega 3	%	0.7
EPA + DHA	%	0.4

### MINERALS

Calcium	%	1	Copper	mg/kg	10
Phosphorus	%	0.8	Iron	mg/kg	200
Sodium	%	0.36	Manganese	mg/kg	80
Potassium	%	0.6	Zinc	mg/kg	232
Magnesium	%	0.07	Selenium	mg/kg	0.14
			Iodine	mg/kg	3.4

### VITAMINS

Vit. A	IU/kg	32000
Vit. D3	IU/kg	800
Vit. E	mg/kg	600
Vit. C	mg/kg	300
B1 (Thiamin)	mg/kg	55
B2 (Riboflavin)	mg/kg	55
Calcium pantothenate	mg/kg	165
B6 (Pyridoxine)	mg/kg	82.5
B7 (Inositol)	mg/kg	1100
B12 (Cyanocobalamin)	mg/kg	0.17
Niacin	mg/kg	500
Biotin	mg/kg	3.2
Folic acid	mg/kg	16.8
Choline	mg/kg	2500

### OTHER NUTRIENTS

Taurine	%	0.2
L-Carnitine	mg/kg	100
Glucosamine + chondroitin	mg/kg	1000
Lutein	mg/kg	5

### METABOLISABLE ENERGY (ME)

ME (NRC 74)	kcal/kg	4048
ME (NRC 85)	kcal/kg	3630
ME (Measured)	kcal/kg	3900