

Client's Name:

Pet's Name:.....

Recommended Diet:

Recommended Daily intake:

HYPOALLERGENIC



Nutrition in pets with dietary sensitivity

The recommended diet

Feeding the right diet is the foundation of managing pets with food sensitivities, intolerances and digestive tract disorders. Everyone who comes into contact with your pet should realise the importance of feeding only the recommended diet. This means avoiding any treats or snacks. It is also important that your pet does not scavenge food outside.

Specially formulated diets, such as Royal Canin Hypoallergenic diets, are a very important aid for your pet.

To maximise diet benefits, feed little and often, dividing the daily allowance of food into two to four small meals of fresh food. Your pet should always have clean, fresh drinking water available.

Royal Canin Hypoallergenic diets are formulated to minimise the number of potential sources of sensitivity or intolerance. They are lactose-free and wheat gluten-free.



Changing your pet's diet

Changing your pet's diet should generally be carried out over several days. On day 1, begin by adding a small amount of the new diet to your pet's existing food. As each day passes, add more of the new diet to less of the original food, until eventually you are only feeding the new diet. This change should take around 5 days. However where food allergy or intolerance is suspected, or where there is acute diarrhoea, Hypoallergenic can be fed without a transition phase.

Royal Canin are leaders in palatability. So confident are we that your pet will enjoy his food that we offer a no quibble, money-back guarantee. Simply return the food to your veterinary practice for a full refund.



A specific diet for your pet

Royal Canin Hypoallergenic diets are recommended as an aid in the investigation and management of pets with:

- Dietary sensitivity & allergy to a food component
- Dietary intolerance
- Acute diarrhoea
- Chronic diarrhoea
- Inflammatory bowel disease (IBD)

Dietary sensitivity and intolerance can manifest as:

- Skin disorders
- Vomiting
- Diarrhoea

A highly digestible diet with the minimum number of sources of potential 'allergens' is indicated in the diagnosis and management of dietary sensitivity.

Royal Canin Hypoallergenic diet is also suitable to help manage diarrhoea due to other causes. In such cases, the diet presents a low digestive challenge. It is suitable for use in adult dogs and cats, puppies and kittens.

Key features

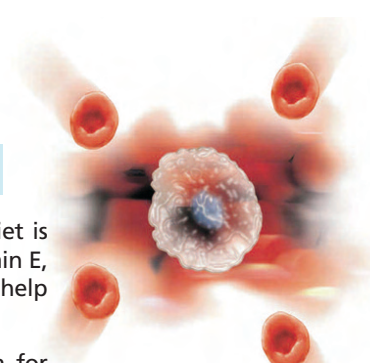
The key features of Royal Canin Hypoallergenic diet are:

- Low molecular weight protein
- Low allergy protein (soy protein isolate)
- Highly digestible
- Lactose-free
- Wheat gluten-free

Antioxidants

Royal Canin Hypoallergenic diet is enriched in antioxidants (vitamin E, vitamin C, taurine, lutein) to help maintain health and vitality.

Antioxidant is a general term for different types of nutrients such as vitamins, minerals and other components naturally present in many foods. Antioxidants neutralise the free radicals produced even during normal body metabolism.



Royal Canin Customer Services
+44 (0)845 300 6015

Email: royalcaninvet@crownpetfoods.co.uk
www.royalcanin.co.uk
www.royalcanin.ie

Nutrition in pets with dietary sensitivity

Answers to your questions

My pet is affected by 'acute diarrhoea', what does this mean?

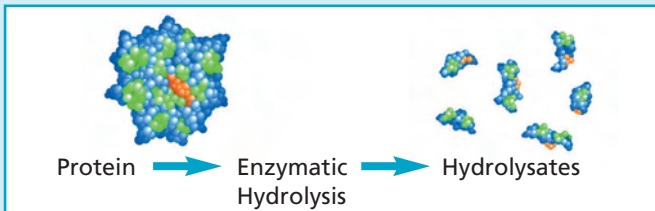
Your pet is affected by acute diarrhoea when the normal digestive processes are disturbed. Water and nutrients are not efficiently absorbed from the intestine into the body; this results in large volumes of diarrhoea. Pets with severe diarrhoea are at risk of becoming dehydrated due to this loss of fluid. Vomiting, if present, results in more fluid loss.

Your veterinary surgeon will advise you when to begin to feed with Royal Canin Hypoallergenic diet. This highly digestible, 'bland' diet allows the intestine to easily digest and absorb the essential nutrients needed by your dog or cat.

Why does my pet's diet contain a specific source of protein?

Royal Canin Hypoallergenic is a highly digestible diet in which the protein content is:

- 'Pre-digested' protein
- Soy protein isolate – a highly digestible, low allergenicity protein



When proteins are hydrolysed they are broken down into small pieces that are unrecognisable to the body. This also increases their digestibility.

Definitions

Proteins

Proteins are complex organic compounds. Protein is the main component of muscles, organs and body tissues such as hair and is vital for growth and body maintenance. A key part of the daily food, proteins are the most common source of dietary sensitivity.

Food allergens

Food allergens (the food fragments responsible for an allergic reaction to the food) are proteins within the food that are not

broken down by the heat of cooking, by stomach acids or by the enzymes that digest food. As a result they survive to cross the gastrointestinal lining, enter the bloodstream and go to target organs, causing allergic reactions throughout the body.

Lactose intolerance

Lactose is a milk protein and lactose intolerance is a common food intolerance which occurs in both dogs and cats. It usually results in diarrhoea. Levels of lactase, the enzyme needed to digest lactose, fall after weaning. If milk is fed to adult dogs and cats, undigested lactose remaining within the small intestine can cause digestive disorders.



Royal Canin Hypoallergenic diet does not contain lactose, so avoiding this problem.

Wheat gluten-free

Wheat gluten is a cereal protein occasionally associated with food sensitivity (food 'allergy') in dogs and cats.

Royal Canin Hypoallergenic diet does not contain wheat gluten, so avoiding this problem

Key benefits

Royal Canin Hypoallergenic diet has special ingredients to meet the specific needs of your pet.



Soy protein isolate digest, which is composed of amino acid chains of low molecular weight, is highly digestible and of very low allergenicity.



Very high amounts of vitamins, pantothenic acid and zinc reduce water losses through the skin and support the barrier effect of the skin.



EPA and DHA omega-3 fatty acids help maintain skin health and elasticity.



Fermentable fibres (beet pulp, FOS) and zeolite promote growth of a beneficial gastrointestinal microflora ('friendly' bacteria) and help support the intestinal mucosa.

Additional Information:

Next Visit:

If you have further questions, please contact your veterinary practice: